

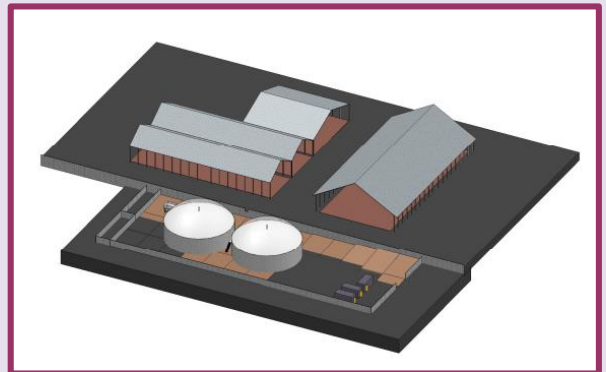
From Manure to Biogas

12011 EFG

Oosterhof Holman Bioenergy is a respected contractor and project developer from the Netherlands. Adverio is contracted to do the PSI-program documents, project management and conceptual design for the first AD facility of the Palestinian Authorities.

The facility will process 46 ton/day of cattle manure and organic waste, 365 days a year. The AD facility provides biogas to a CHP unit (electricity and heat).

Adverio was selected because of our abroad experience, documentation and management skills. Jointly we worked on the needed documents, designs and permit application.



Project Management

- Stakeholders:
 - ✓ Rijksdienst Voor Ondernemend Nederland
 - ✓ Berenschot Groep bv
 - ✓ SGS Nederland bv
 - ✓ Energy for Future Generations Ltd
 - ✓ Palestinian Authorities

PSI (Private Sector Investment program)

- The client wishes to participate in the PSI program:
 - ✓ Adverio provided data for the investment subsidy.
 - ✓ Adverio arranged and made the needed technical documents.

Permit

- ✓ Adverio designed the facility to determine the project layout and providing the client with permit application information.

Design

- ✓ Adverio outlined the biological feasibility, chosen technology, investment and economics.

Design to Build

Adverio was responsible for the PSI-program documents, project management and conceptual design. Working with our network partners, technical suppliers and client.

Client Visit

- Project Definition.
- Questionnaire.
- Evaluating existing Layouts and project information.

Project Management

- Planning.
- Progress Report.
- Contracts with stakeholders.

PSI

- Required Documents.
- Communication with all stakeholders.

Permit

- Layouts.
- Permit Documents.
- Collected requested data from equipment suppliers.

Design

- Process Flow Diagrams (PFDs).
- Block Flow Diagram.
- Mass & Energy Balance.
- Updated Project Definition.
- Layout.
- Equipment List.
- Project Planning.
- Investment (30% accurate).

12 months

Adverio's expert engineers designed the facility in close cooperation with our network partners. At the moment the client is operating the AD installation.

To find out how Adverio can help develop and realise your ambitions, please contact us.

For a complete overview see: www.adverio.eu

Adverio Head Office
Rozenburglaan 13
9727 DL Groningen
The Netherlands

T +31 50 207 1313
E info@adverio.eu

